

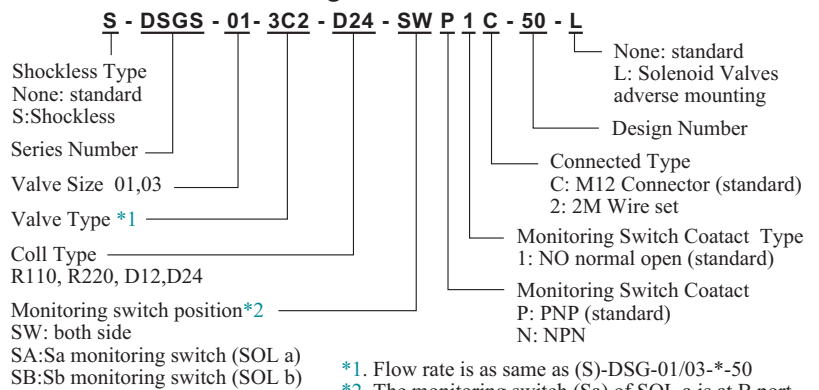
## Solenoid Valves with Monitoring Switch-(S)-DSGS Max. Pressure 31.5 MPa

Injection Machines and Machine Tools  
**Patented**  
 To improve the safety of hydraulic machines

- It can monitor the spool position shifting correctly.
- It is adopted with non-contact parts and zero-torn part with long-life.
- It can choose PNP output and directly check the function with little hysteresis.
- There is no special requirement for the water level in the fluid and the pollution.
- Dust-proof and water-proof level is IP 65. It will not be interfered by the external magnetic field.
- D24 Type Solenoid Valves was awarded CE certificate.

It is available for injection machines, machine tools and the other hydraulic machines that need to improve the safety.

### Model Number Designation



\*1. Flow rate is as same as (S)-DSG-01/03-\*-50  
 \*2. The monitoring switch (Sa) of SOL a is at B port. The monitoring switch (Sa) of SOL a is at A port.

D

China Patent No. ZL200820107394.0  
 Taiwan Patent No. M344413



### Mounting Bolts (Attachment)

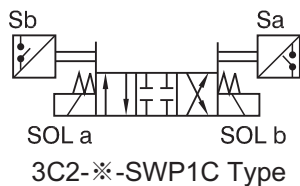
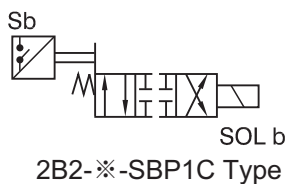
Valve Model No.	Socket Head Cap Screw	Tightening Torque
(S)-DSGS-01	M5 x 45L 4 Pcs	6~7 N·m
(S)-DSGS-03	M6 x 35L 4 Pcs	12~15 N·m
DSHGS-06	M12 x 60L 6 Pcs	100~123N·m

Note) This series of valves can not be mounted in vertical way.

### Switch M12 Connector with Wire (Options)

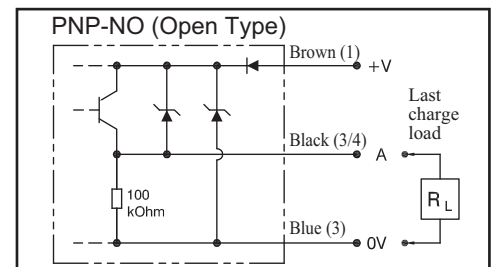
Model	Valve Type	Remark
M124R-PUR-2M (Straight type)	(S)-DSHGS-04-*-50(-L)	2M:2M ( Oil Resistance Cables )
M124RL-PUR-2M (90° Type)	(S)-DSHGS-06-*-50(-L)	

### Graphic Symbol



### Monitoring Switch and Wiring Diagrams

Item	Specification
Supply Voltage Range	10~30 VDC
Max. Output Current	200 mA (32 VDC max.)
Switching Frequency	600 Hz
Ambient Temperature Range	-25~70 °C
Degree of Protection	IP 67



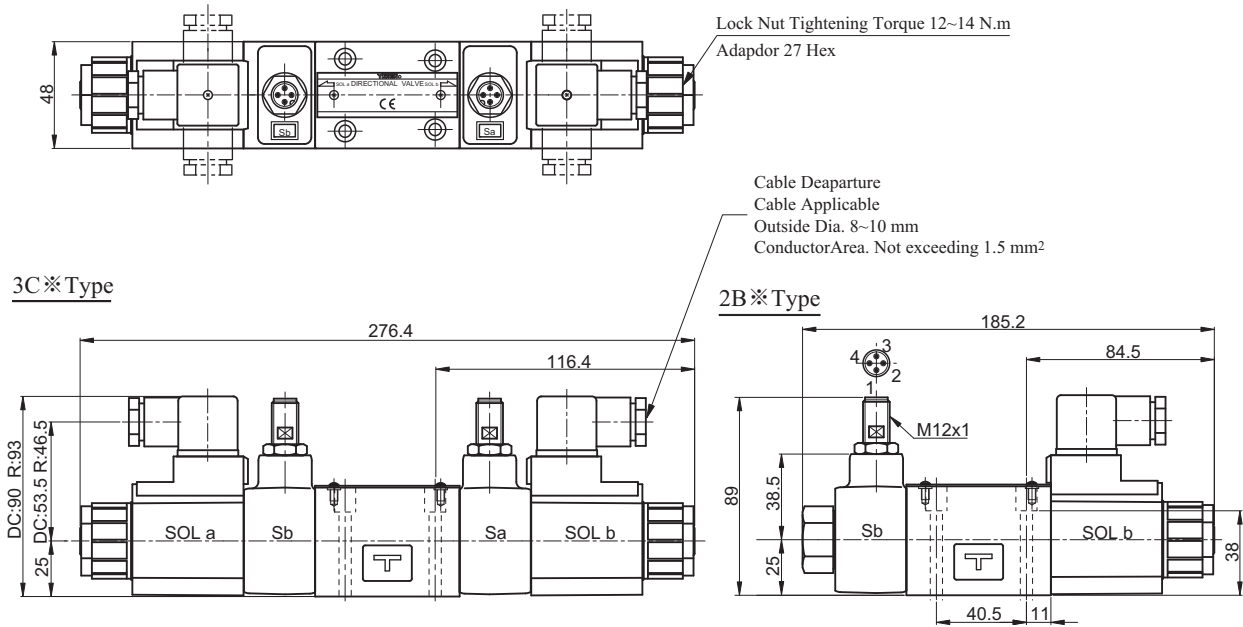
**Ratings:** For the flow and pressure details of valves, please refer to DSHG-\* catalog

Valve Type	Model	Max. Flow L/min	Max. Pressure MPa	Max. T-Line Back Pressure MPa	Max. Changeover Frequency Cycle / min	Mass kg
Standard Type	DSGS-01-3C-*-50(-L)	63	31.5 (Spool Type 60 only 25)	16	300 (R Type nly 120)	3.7
	DSGS-01-2B-*-50(-L)					2.4
Shockless Type	S-DSGS-01-3C-*-50(-L)	40	16		120	3.7
	S-DSGS-01-2B2-*-50(-L)				2.4	
Standard Type	DSGS-03-3C-*-50(-L)	120	31.5 (Spool Type 60 only 25)		240 (R Type nly 120)	8.1
	DSGS-03-2B-*-50(-L)				5.2	
Shockless Type	S-DSGS-03-3C-*-50(-L)	120	16	120	8.1	
	S-DSGS-03-2B2-*-50(-L)			5.2		



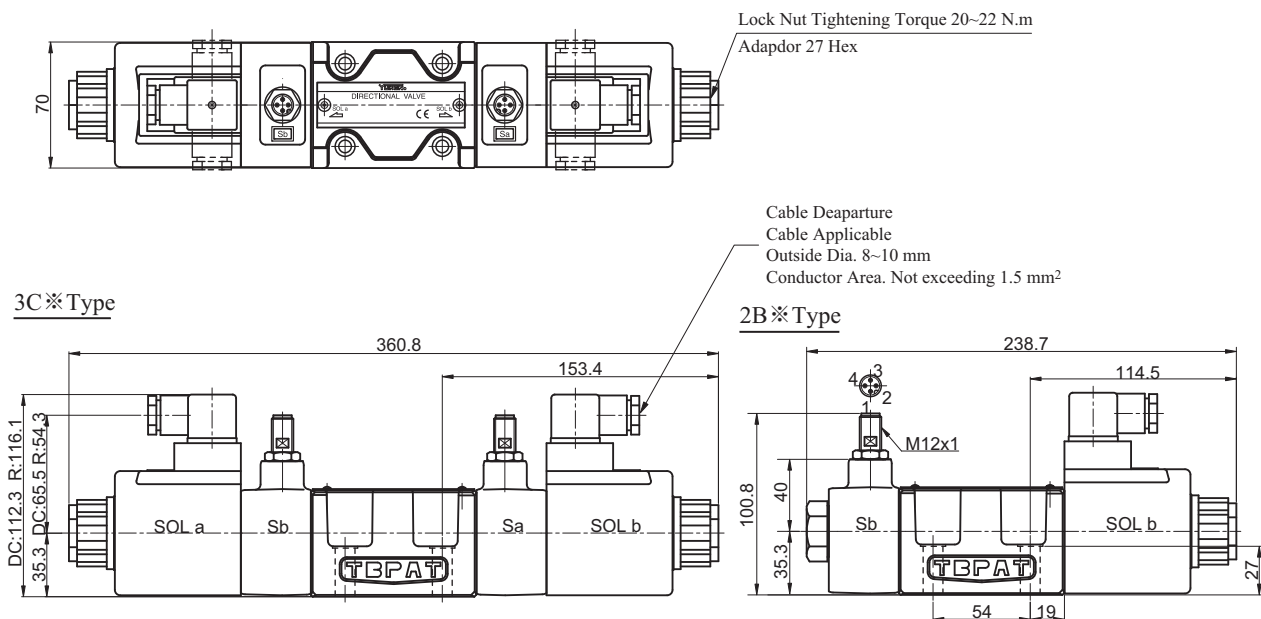
## Solenoid Valves with Monitoring Switch-(S)-DSGS Max. Pressure 31.5 MPa

### ■(S)-DSGS-01 ( Mounting Surface: ISO 4401-AB-03-4-A Standard )



Note) For dimensions of valves mounting surface, please refer to DSGM-01 sub-plate on page 88.

### ■(S)-DSGS-03 ( Mounting Surface: ISO 4401-AC-05-4-A Standard )



Note) For dimensions of valves mounting surface, please refer to DSGM-03 sub-plate on page 91.

D