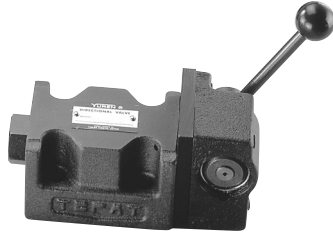


Manually Operated Directional Valves Max. Pressure 25 MPa



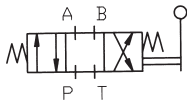
These valves may be used to manually shift the spool position and change the direction of oil flow.

Ratings

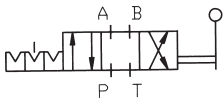
Valve Size	Model No.	Max. Flow L/min	Max. Pressure MPa (kgf/cm ²)	Max. T-Line Back Pressure MPa (kgf/cm ²)	Mass Kg.
3/8	DM※-03-2B※-50	100	25 (250)	16 (160)	DMT:5 DMG:4
	DM※-03-2D※-50				
	DM※-03-3C※-50				
	DM※-03-3D※-50				

Graphic Symbol

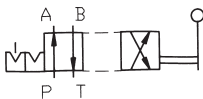
Spring Centered Models 3C※



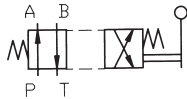
No-Spring Detented Models 3D※



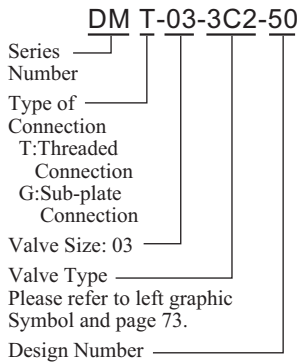
No-Spring Detented Models 2D※



Spring Offset Models 2B※



Model Number Designation



Note: For other valve types, please contact our sales engineers.

Sub-plates

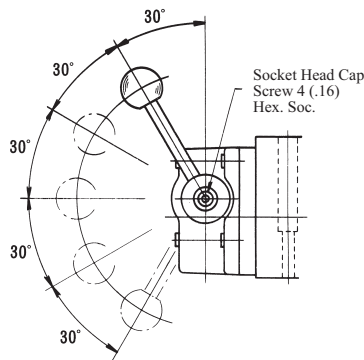
Valve Model No.	Sub-plate Model No.	Piping Size Rc	Mass kg
DMG-03	DSGM-03-40	3/8	3
	DSGM-03X-40	1/2	
	DSGM-03Y-40	3/4	4.7

Mounting Bolts (Attachment)

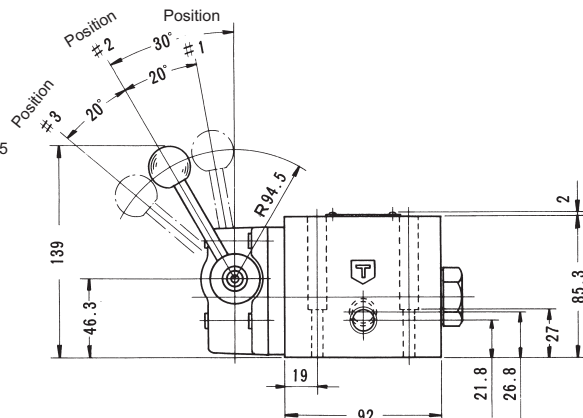
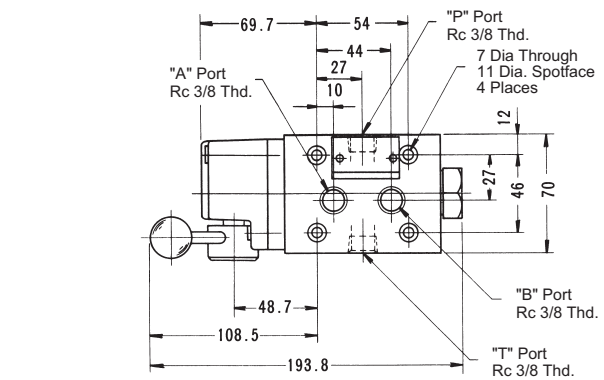
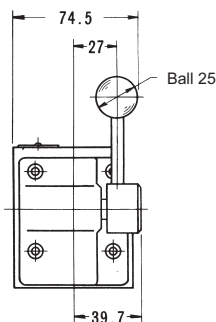
Model No.	Socket Head Cap Screw	Q'ty	Tightening Torque N•m
DMG-03	M6 x 35 Lg	4	12~15

DMT-03 How to change lever position

The lever position can be changed to any position in five different positions shown on the sketch in the right. For the lever position change, remove the Soc. Hd. Cap Screw and lever, set the lever at the required position and tighten it with Soc. Hd. Cap Screw firmly.



* Handle Lever Max. Torque 30 N•m (3.06 kgf•m)

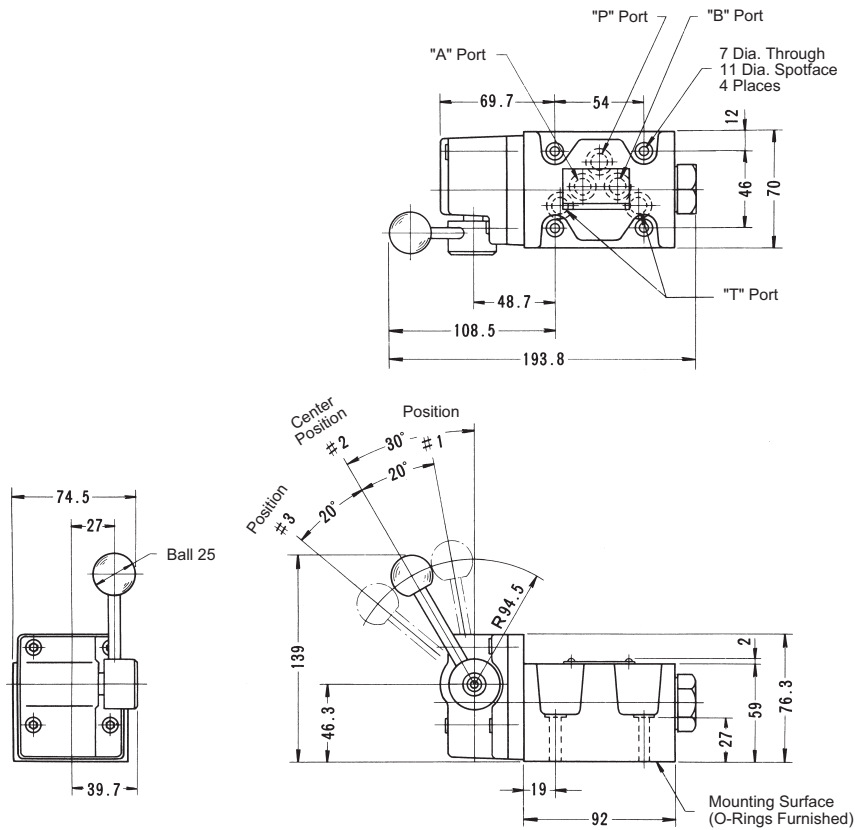


Manually Operated Directional Valves Max. Pressure 25 MPa

DMG-03

Mounting Surface:ISO 4401-AC-05-4-A

- ★1.The position of operating the lever can be changed as required. For the details, please see the DMT-03 in the previous page.
- ★2.Max. torque of operating the lever:
30 N•m (3.06 kgf . m)



Note: For dimensions of mounting surface, please refer to the dimensional drawing of the sharable sub-plate (page 91).

D