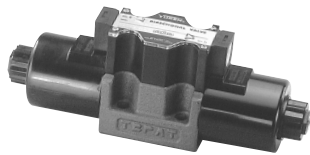


Solenoid Operated Directional Valves Max. Pressure 31.5 MPa



DSG-03 Series

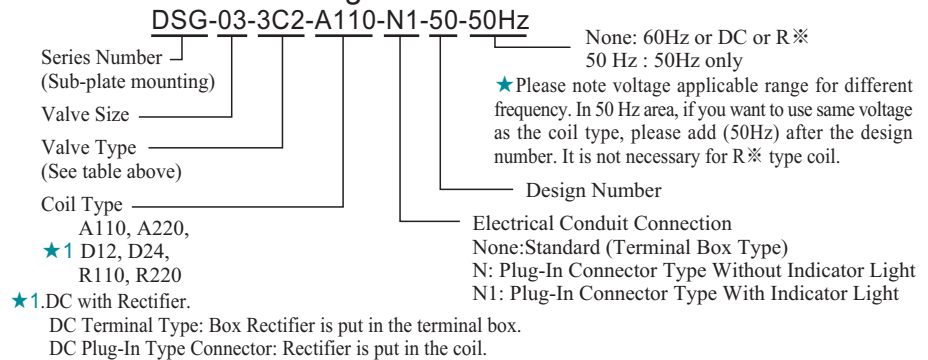
These valves are adapted with strong wet-type solenoid and circuit designs to accomplish high pressure, large volume flow and lower pressure drop. The optimum valve for any system can be utilized since many spool types and various solenoids are all available, along with other optional function.

- The pressure drop caused by the passing of pressurized oil is reduced to approx. 1/2 of the conventional Yuken model.
- Good Light Weight design has accomplished to reduce body weight.

Rating

Valve Size	Model No	Max. Flow L/min	Max. Pressure MPa (kgf/cm ²)	Max. T-Line Back Pressure MPa (kgf/cm ²)	Max. Changeover Frequency Cycle/min	Mass kg		
						Type of Solenoid	AC	DC.R
3/8	DSG-03-2B※-※-50	120	31.5 (315) Spool Type 60 only 25 (250)	16 (160)	240 (R Type Only 120)		2.9	3.6
	DSG-03-2D2-※-50						3.6	5
	DSG-03-3C※-※-50						3.6	5

Model Number Designation



Sub-plate

Valve Model No.	Sub-plate Model No.	Piping Size Rc	Mass kg
DSG-03	DSGM-03-40	Rc	3
	DSGM-03X-40	3/8	
	DSGM-03Y-40	1/2	4.7

- Sub-plates are available. When ordering, please specify sub-plate model no. from the table above.
- Please refer to page 91 for dimension details.

Valve Type

Valve Type	3C2	3C3	3C4	3C40	3C60	3C12
Graphic Symbol						
Valve Type	2B2	2B3	2B8	2B2B	2D2	3C9
Graphic Symbol						

- Valve, other than the types above are available, please contact our sales engineers for your requirements.
- 2B2,2B3,2B8 & 2D2 type valves have no center position.

Mounting Bolts (Attachment)

Socket Head Cap Screw	Tightening Torque
M6 x 35Lg 4pcs	12~15 N•m

Solenoid Rating

Electric Source	Coil Type	Serviceable Voltage Range		Current & Power at Rated Voltage		
		Frequency (Hz)	Voltage (V)	Inrush (A)	Holding (A)	Power (W)
AC	A110/50Hz	50	100-120	3.90	0.78	39
	A110/60Hz	60	100-120	3.86	0.71	39
	A220/50Hz	50	200-240	1.82	0.34	37
	A220/60Hz	60	200-240	1.85	0.34	39
DC	D12	-	10.8-13.2	-	2.75	33
	D24	-	21.6-26.4	-	1.41	34
AC → DC	R110	50/60	100-120	-	0.42	38
	R220	60/60	200-240	-	0.20	38

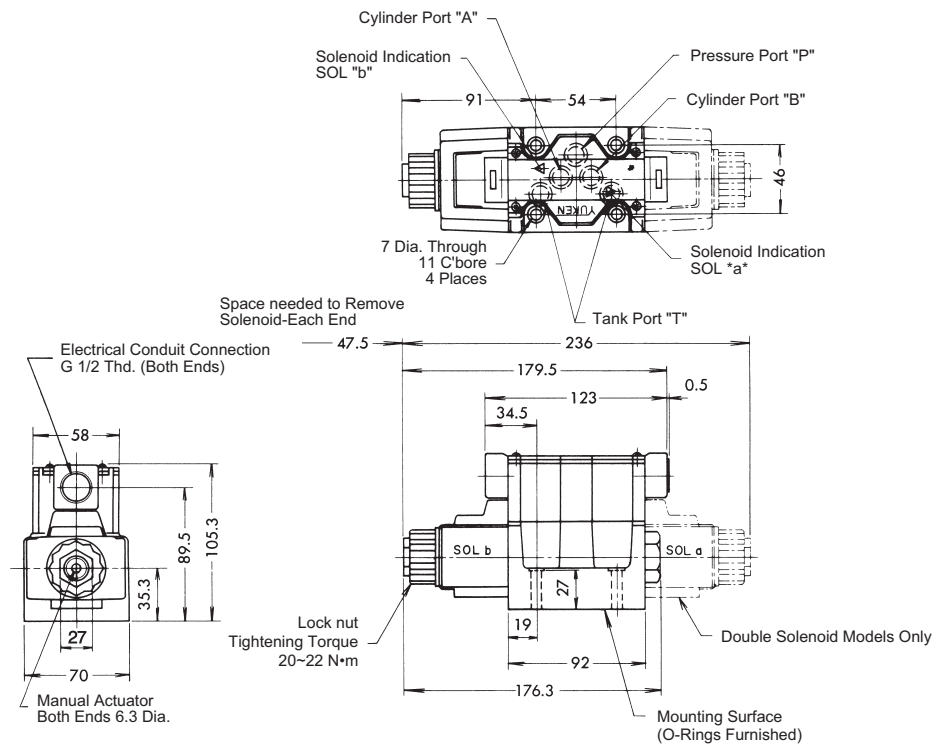
There are other coil types available, please contact our sales engineers for your requirement.

Solenoid Operated Directional Valves Max. Pressure 31.5 MPa

Model with AC solenoids : DSG-03-※※※-A※

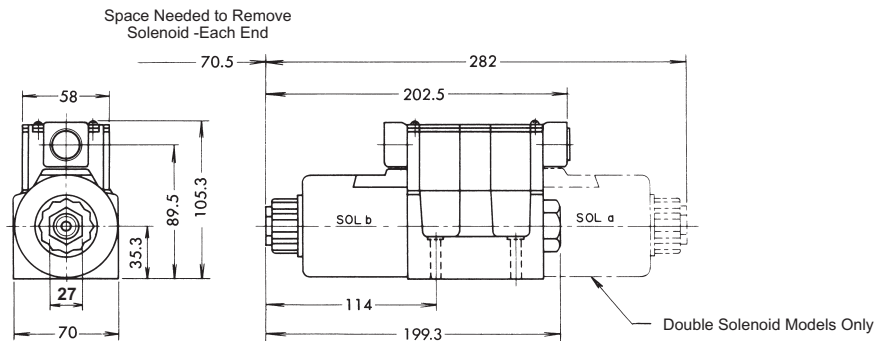
Mounting Surface:ISO 4401-AC-05-4-A-80

- Spring Centered
- No Spring Detented
- Spring Offset



Model with DC solenoids : DSG-03-※※※-D※

Model with R solenoids : DSG-03-※※※-R※



• For other dimensions, please refer to the above model with AC solenoids.

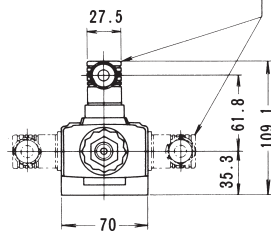
Note: For dimensions of mounting surface, please refer to DSGM-03 type sub-plate on page 91.

Solenoid Operated Directional Valves Max. Pressure 31.5 MPa

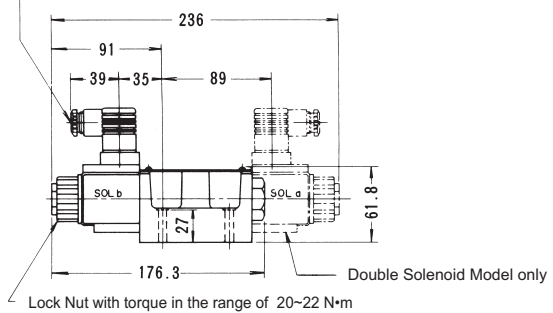
DIN type Connector, DIN Type Connector with Indicator Light

Model with AC Solenoids : DSG-03-***-A*-N/N1

Three positions of cable departures are available by loosening "Lock Nut" as shown. After location, tighten "Lock Nut".

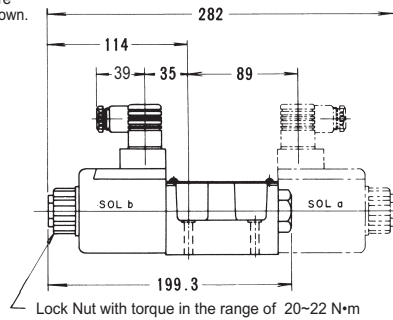
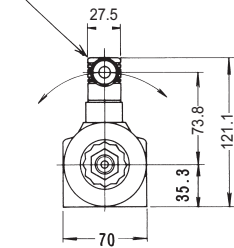


Cable Departure
Cable Applicable
Outside Dia. ...8-10mm
Conductor Area...Not exceeding 1.5mm²



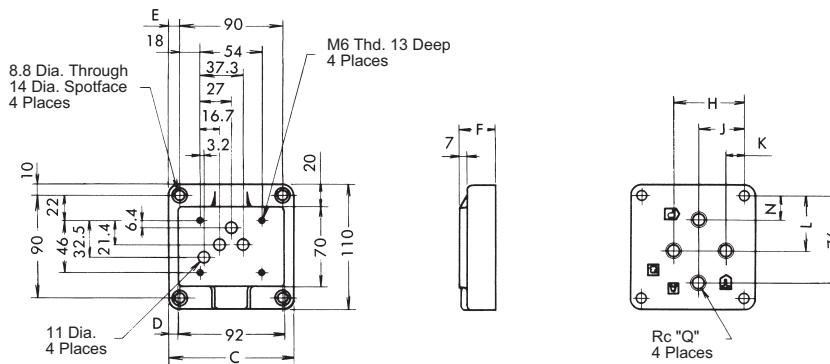
Model with DC solenoids : DSG-03-***-D*-N/N1
Model with R solenoids : DSG-03-***-R*-N/N1

Three positions of cable departures are available by loosening "Lock Nut" as shown. After location, tighten "Lock Nut".



• For other dimensions, please refer to Terminal Box Type.

Sub-plate DSGM-03, 03X, 03Y-40



Model No.	C	D	E	F	H	J	K	L	N	Q
DSGM-03-40	110	9	10	32	62	40	16	48	21	3/8
DSGM-03X-40										1/2
DSGM-03Y-40	120	14	15	50	80	45	10	47	16	3/4

D